



**BURG**  
**MECHANICS**  
Production in Perfection



# BURG MECHANICS

Production in Perfection

Welcome to **Burg Mechanics**! We specialize in manufacturing products from all common metals and plastics. Our focus is on highest precision and quality to provide our customers with customized solutions for their individual requirements.

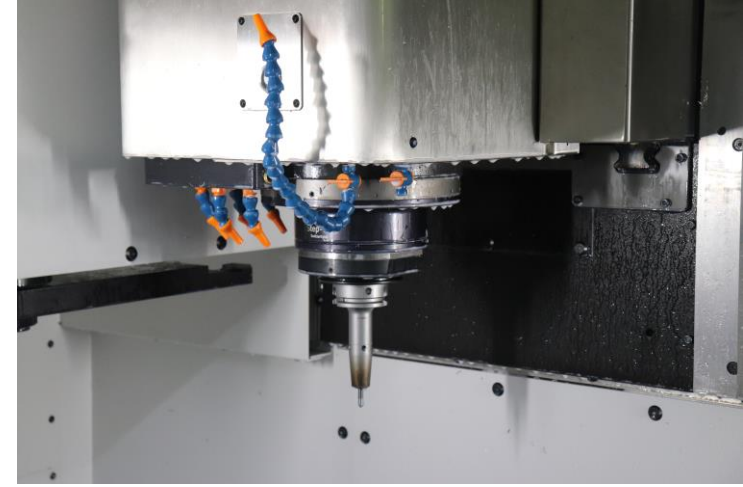
# Services

- We manufacture the following products for you, with high quality and precision:

Milled parts

Turned parts

Modular parts



# Milled Parts

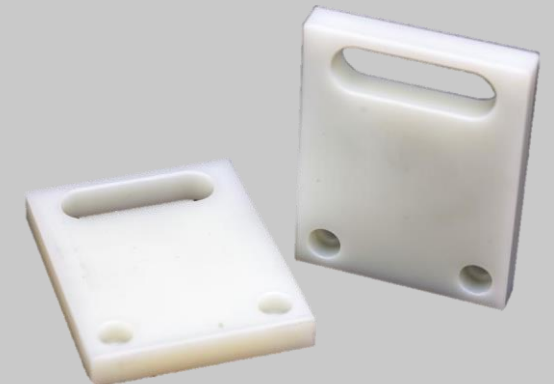
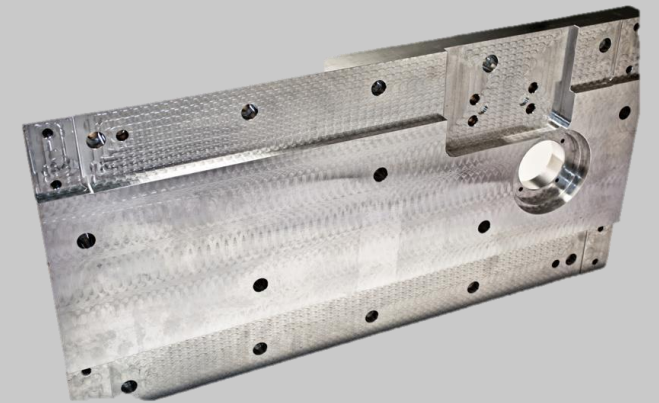
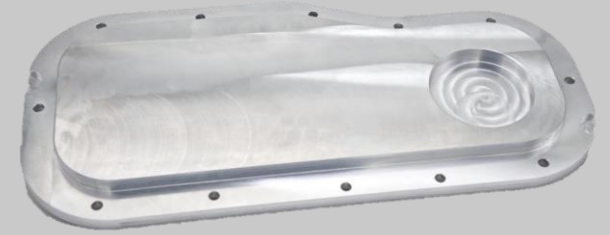
Our modern facilities with 3- and 5-axis milling machines enable us to produce prototypes, single parts or serial parts exactly according to your requirements. Due to optimal technical equipment, a wide variety of materials can be set up on our machines. All machines are equipped with the latest 3D measuring technology, thus ensuring the highest manufacturing quality. The digital structure and data network of our company provide us with a flexible manufacturing process that guarantees fast and punctual delivery.

## Available specifications:

- Milled parts up to 700 x 600 x 500 mm and 450kg
- Tolerances up to  $\pm 0,005$  mm
- Quantity of 1 - 50 parts

## Available Materials:

- Aluminium
- Brass
- Copper
- Stainless Steel
- Construction Steel
- Plastics



# Turned Parts

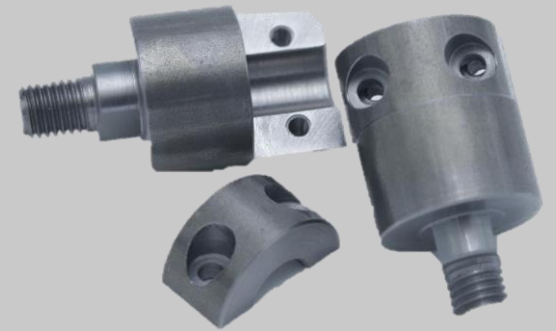
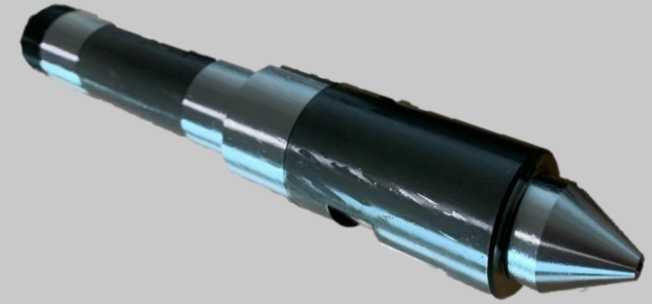
We manufacture high-quality turned parts for you from single pieces to medium-sized series parts from a wide range of materials. Our modern technical equipment and an innovative manufacturing process enable us to deliver precision-fit and ready-to-install results. Through years of cooperation with special partners, we can also offer you cylindrical grinding of the components, with the highest quality demands.

Available specifications:

- Turned parts  $\varnothing 4 - \varnothing 200$  mm and up to 400 mm length
- Tolerances of up to  $\pm 0,01$  mm
- Quantity of 1 – 50 parts
- Laser engraving

Available materials:

- Aluminium
- Brass
- Copper
- Stainless steel
- Construction steel
- Plastics

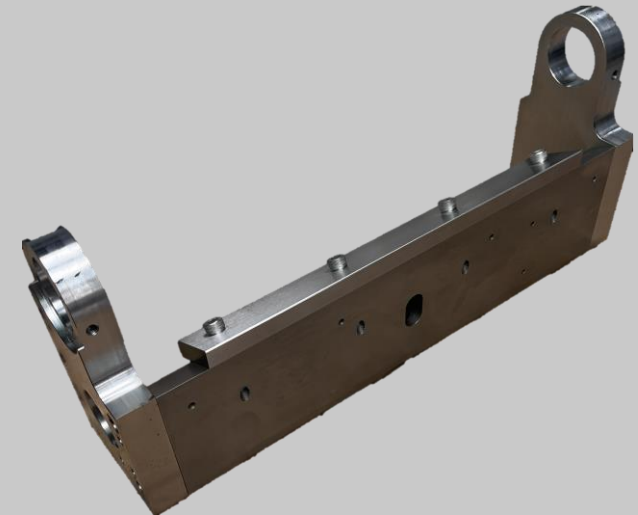
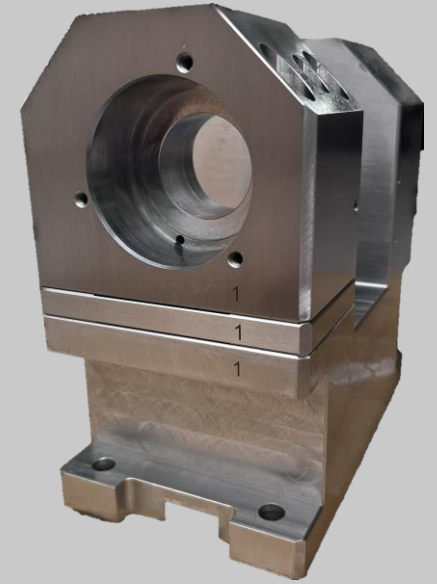


# Modular Parts

Save time and internal resources by using our service for component assembly. We will gladly take over the production of ready-to-install components and acquire all necessary standard parts according to your requirements. Of course, final testing and traceable documentation of the assemblies are part of our range of services. We are happy to act as a competent partner in the planning, development and implementation of your products.

Available specifications:

- Pre-, partial or final assembly
- Quantity of 1 - 50 pieces
- Procurement of all standard parts
- Final inspection and documentation

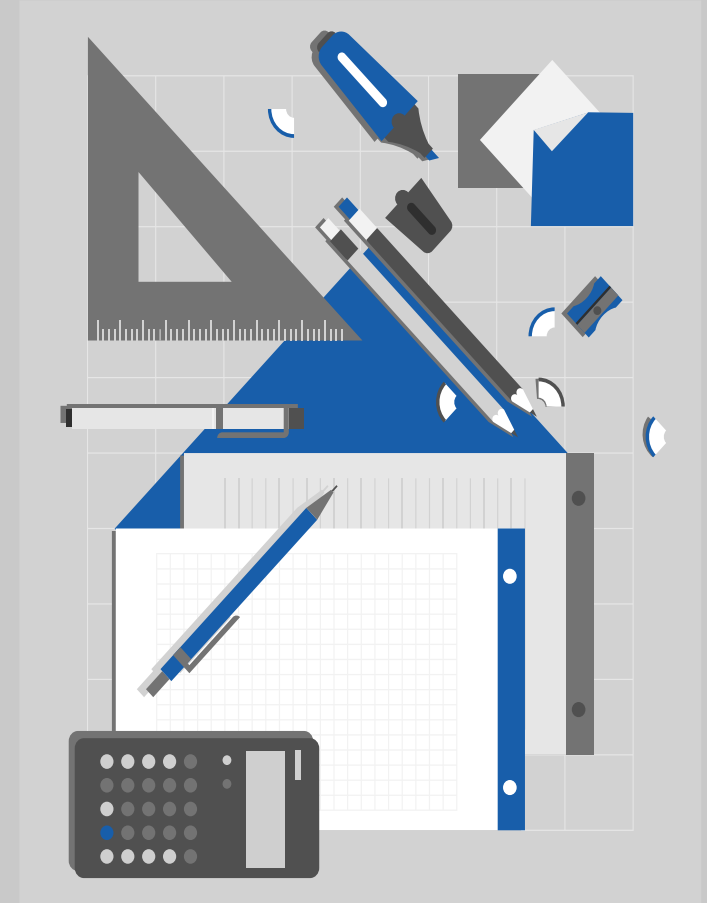


# Prototypes

We are also happy to support you in the development and implementation of complex prototypes. We advise you on manufacturing processes, technical implementation and material selection. Our innovative work processes and low manufacturing tolerances guarantee you a satisfying product.

Our company specializes in producing high-quality prototypes for a wide range of industries, from medical technology and mechanical engineering to your very specific applications.

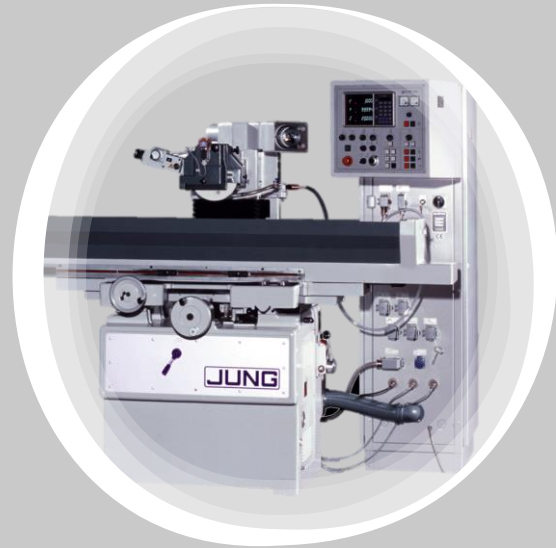
Whether you need a functional prototype to validate your idea, a model for presentation purposes or a pre-production series for more extensive testing - Burg Mechanics is your reliable partner on the road to success.



# Our Facilities

Burg Mechanics GmbH carries an innovative and diverse inventory of machines. Our digital and partially automated production processes, as well as our highly qualified employees enable us to meet the qualitative demands of our customers.

Get an overview of our machines on the following pages!





# Our Machinery

Milling				
Number	Type	Model	Travels	Tolerances
1x	5-Axis	Mikron Mill E 700 U	700 x 600 x 500 mm	±0,005 mm
1x	3-Axis	Hurco VMX 30	762 x 510 x 610 mm	±0,01 mm
2x	3-Axis	Hurco VMX 24	610 x 510 x 610 mm	±0,01 mm

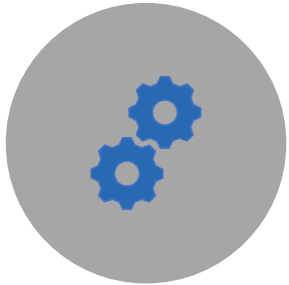
Turning				
Number	Type	Model	Travels	Tolerances
2x	CNC	Weiler W35	Ø 360 x 700 mm	±0,01 mm
2x	CNC	Hurco TM8	Ø 256 x 525 mm	±0,01 mm

# Our Machinery

Grinding				
Number	Type	Model	Travels	Tolerances
1x	Surface Grinding	Jung JF520	600 x 250 x 300 mm	±0,002 mm
2x	Surface Grinding	Jung HF50	600 x 250 x 200 mm	±0,02 mm

Eroding			
Number	Type	Model	Travels
2x	Die Sinking EDM	Agie Compact 1	250 x 160 x 250 mm
1x	Wire EDM	Agie Progress V3	500 x 350 x 426 mm

# Promise of Quality



High-quality  
processing



Quick delivery



Customer  
satisfaction

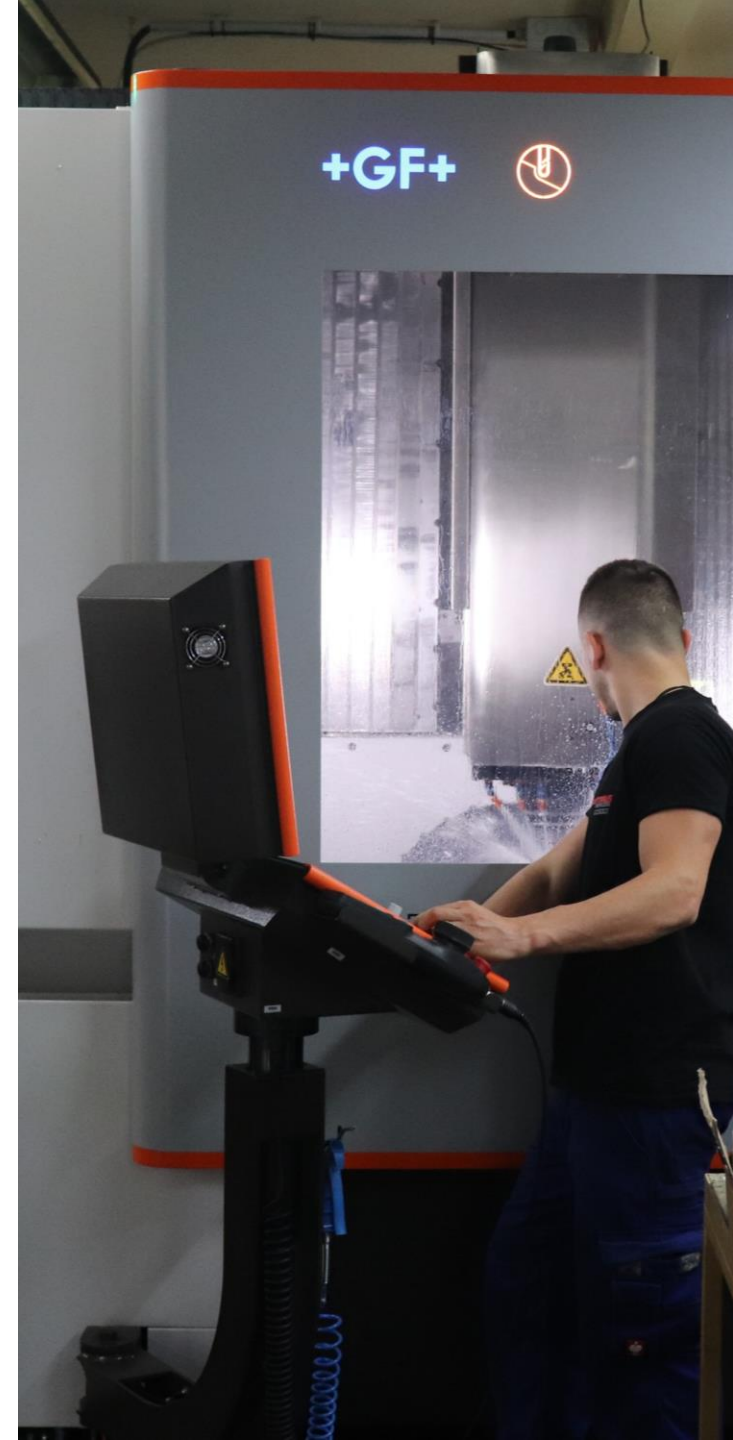


Customized  
solutions

# Quality at Burg Mechanics

Our state-of-the-art manufacturing facilities and experienced team ensure that your product is manufactured with the highest level of accuracy. We use innovative technologies and high-quality materials to provide you with the highest quality products that are exactly what you envisioned.

Every project is unique, and we treat it as such. We work closely with you to understand your requirements and provide customized solutions. Whether it's specific materials, technical requirements or design aspects, we adapt to your individual needs.



# About Us

Frankfurt am Main  
Deutschland



Our production site in Frankfurt am Main, Germany offers optimal logistical conditions for working with customers and cooperation partners in Europe.

# About Us

Burg Mechanics GmbH was founded to innovatively manufacture individually tailored metal products for use in specialized machinery and equipment. The Industry 4.0 concept is considered the structural guiding principle for Burg Mechanics.

The company's founder, Sascha Burg, has worked as the managing director of a machining company for many years. In order to implement his vision of a completely digital production, he has now founded Burg Mechanics GmbH. With the basic conviction that lean processes, digital workflows, perfect quality and best-in-class customer support go hand in hand.

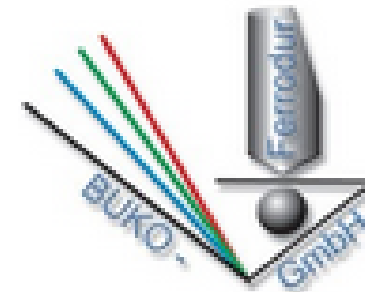
# About Us

"My motivation is to provide customers with high quality products, at a reasonable price and with fast delivery. I have seen many manufacturing companies in my career and there are few that are comprehensively effective for the customer. Industry 4.0 offers excellent opportunities to change this." – Sascha Burg, Founder



# Operating Network

Burg Mechanics GmbH maintains an extensive network of cooperation partners. The support of and cooperation with specialized, flexible and efficient partners from this network is part of the DNA of Burg Mechanics GmbH.





## Contact:

E-Mail: [info@burg-mechanics.de](mailto:info@burg-mechanics.de)

Phone: +49 (0) 171-1900173

Burg Mechanics GmbH  
Am Hasensprung 3  
61462 Königstein im Taunus

